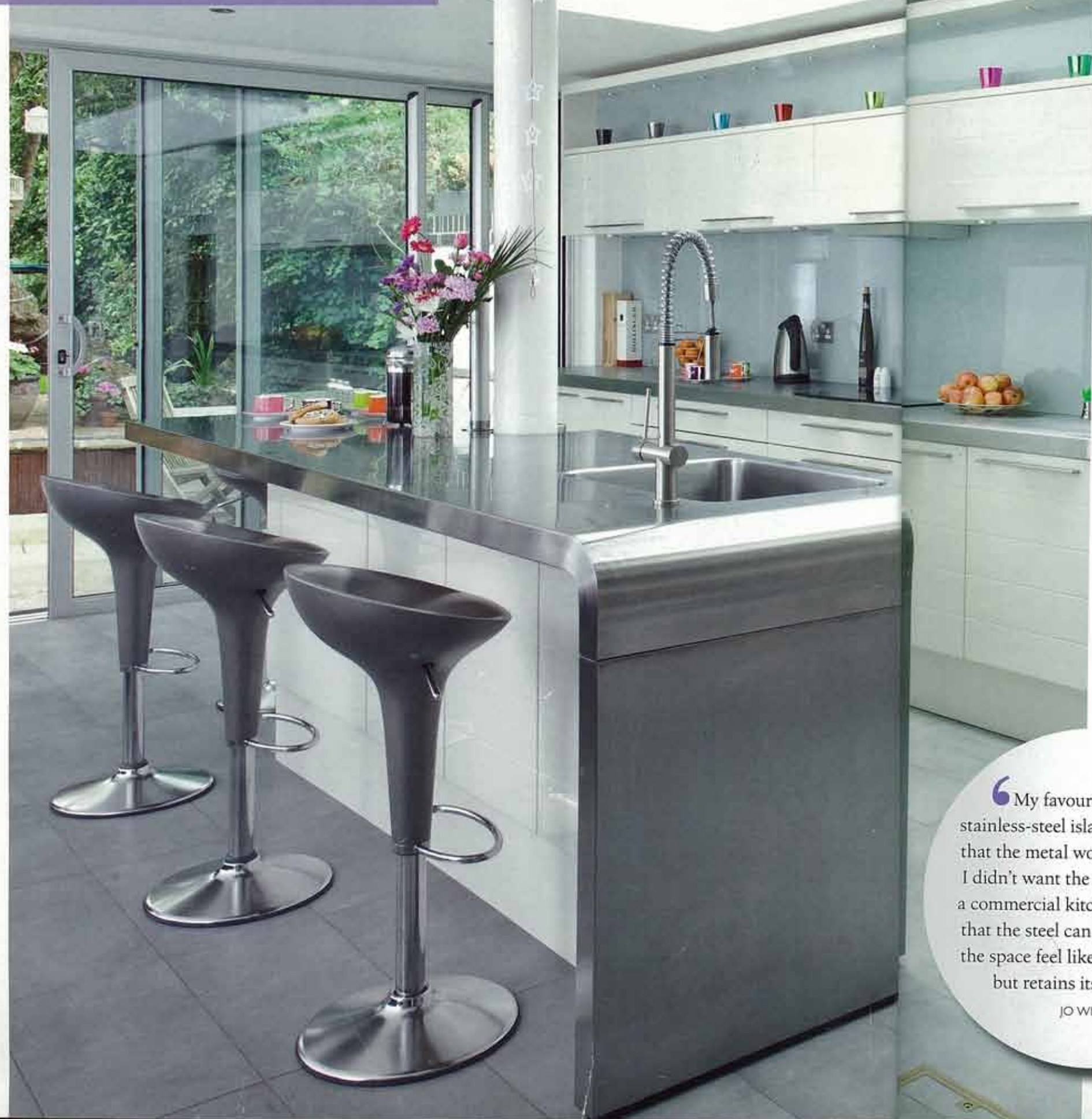


To tie in with the room's professional style, Jo chose silver Bombo bar stools, which are great when friends pop round for a morning coffee. The brightly coloured Andrew Martin cups and saucers came from John Lewis



Being well acquainted with their next-door neighbours proved to be very useful when Jo and Guy Wilson decided they wanted to extend their kitchen. The couple and their two daughters, Isabella, 14, and Tilly, 10, had lived in a friendly pocket of north London for many years and, after discovering their neighbours were going to be building on to the back of their house, too, both families decided to undertake the work concurrently for speed and the minimum of hassle.

When the time came for choosing the kitchen cabinetry, Guy, an interior and technical furniture designer, had strong ideas about what he and Jo wanted. 'It needed to be in an unusual style with a contemporary twist but without looking as if it would date in six months' time,' he explains.

Fortunately, the couple found a great designer in Vicky Shudell from local company Funktional Kitchens. Vicky was already designing the kitchen for the Wilsons' neighbours when she received their commission. As the family next door had decided on a plain white design, Vicky suggested soft, creamy white units with etched detailing across the front, so as not to duplicate the other kitchen. 'As soon as Vicky showed me the cabinetry I knew it was right,' says Jo. 'I instinctively felt it looked stylish and a bit different without being a "trend" as such, and the fact that the furniture was a brand new design increased our delight.'

One problem the couple had to overcome was how to incorporate an existing pillar into the layout. Guy knew that with some ingenious planning he could make the post a feature and as they had already decided on a capacious multi-purpose central workstation, he decided to integrate the pillar to fit into the body of the island. Then he seamlessly moulded the worktop around it in an unbroken, flowing expanse of material. However, because Jo was adamant that she wanted the surfaces to be in stainless steel, they



Rounded corners give the island a much softer feel than sharp angular edges. The thick, tactile bar handles with finger holes make a lovely feature and show attention to detail



Horizontal lines moulded into the doors give an element of pattern and texture to the otherwise pristine hi-gloss. A telescopic hood by Siemens has been neatly built in above the hob and has three extraction rates for getting rid of odours quickly

Integrating their appliances behind cabinetry fronts meant the Wilsons had no need for a separate utility room. The units muffle any excess noise and don't interrupt the flow of the design. Jo's washer dryer has 15 programmes with fuzzy logic, including a hand-wash cycle and a quick wash for half loads



My favourite feature is the stainless-steel island. I was nervous that the metal would look cold and I didn't want the room to resemble a commercial kitchen. I like the fact that the steel can scuff, as it makes the space feel like a family kitchen, but retains its hi-tech look

JO WILSON

DESIGN & CABINERY

- Vicky Shudell at **Funktional Kitchens**, 142 Crouch Hill, London N8 9DX (020 8341 2020) www.funktionalkitchens.co.uk
- Hi-gloss cabinetry from the Systemat range with bespoke walnut veneered units from AKA Design

WORKTOPS

- Stainless steel. Price per linear m, from **£800**

SINK & TAP

- Single-bowl sink in stainless steel, as integral part of worktop **£587**
- 00909 Oxygene HiTech monobloc mixer tap with pull-out rinse in chrome, Gessi **£325**

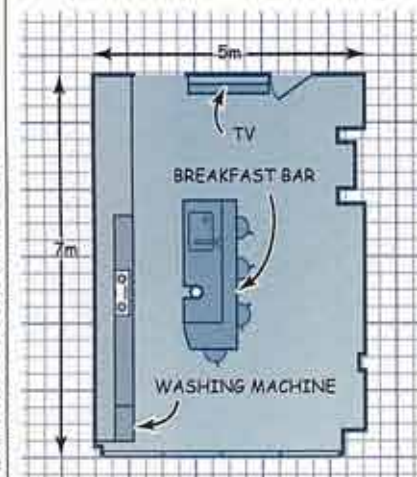
APPLIANCES (shown)

- HB750550B built-in single oven, Siemens **£676**
- HB86K570B built-in combination microwave, Siemens **£849**
- EH785002E four-zone induction hob, Siemens **£799**
- LI46931 GB canopy extractor hood, Siemens **£395**
- KAS8NP90GB American-style fridge freezer, Siemens **£1,826**
- Fully integrated washer dryer, for similar try WD11442GB, Siemens **£894**

APPLIANCES (not shown)

- Fully integrated dishwasher, Siemens **£635**

For stockists, see page 152



GUIDE PRICE

- Starting price for a Funktional Kitchens design **£15,000**



Jo opted for a stainless-steel single oven and a combination microwave to complement her induction hob and match the fridge freezer

had great difficulty creating a template. In the end, Guy made an MDF cut-out and Vicky asked her sheet metal supplier to wrap the template in the metal. The result is a stunning bespoke piece that is the crowning jewel of the kitchen. 'The island is so multifunctional,' smiles Jo. 'We play games on it and I prepare food there. It's a very useful divide as Isabella and Tilly know not to come onto "my side" of the island when I'm getting dinner ready.'

Designer Vicky recommended Siemens appliances because the family wanted quality, value for money models. 'I'm a passionate cook and use my oven and hob every night, so I wanted reliable products,' says Jo.

The mixture of light coloured furniture, glass splash-backs and stainless-steel worktops gives the impression of a beautifully modern kitchen with a chic finish. The result is a true testament to Vicky and Guy's combined creativity and ingenuity. **BK**

MY TOP TIP FOR SUCCESSFUL PLANNING: 'Always work with a designer, even if you know what you want, as they will help you position everything correctly'



A combination of sliding glass doors across the back of the kitchen and the skylight over what was once an alleyway means the room has a constant supply of daylight. The room's pale hi-gloss cabinetry bounces the light around the space.

The sizeable island unit, with its large moulded sink, is bespoke and was built to wrap around the existing supporting pillar. To add warmth to the light, pearlescent scheme, Guy made the TV trim and a chic floating cabinet from luscious veneered walnut

