

essential

THE UK'S NUMBER 1 JULY 2016 £4.25

KITCHEN

BATHROOM BEDROOM

ESSENTIAL
GUIDE
BATHROOM
WALLS

*Ready for
Summer*

SMART
KITCHENS
TIME TO GET
CONNECTED

*Design-led
Schemes*

50+ PAGES OF
GORGEOUS HOUSES

IT'S A BREEZE
natural bedroom ideas

BETHAN GRAY | SPA BATHROOM IDEAS | BERT & MAY | VASES | AUDIO ROUND-UP

Light Fantastic

Sarah and Alastair Brooks' new kitchen is an inviting, light-filled space designed for enjoying meals with family and friends

PICTURES PAUL CRAIG | WORDS AMELIA THORPE

FEELING FRESH

Back-painted glass makes a practical, easy-clean splashback and its crisp green colour adds a fresh finish

ESSENTIAL *kitchens*



A GIRL'S WORLD

Sarah with daughters
Elsie (left) and Isabelle



PERCH UP

Right The curved profile of the overhanging countertop makes a comfortable spot to pull up a bar stool.

COOK ZONE

Below As a keen cook, Louise was particular about her cooking hob by Barazza and four different ovens all from Gaggenau.



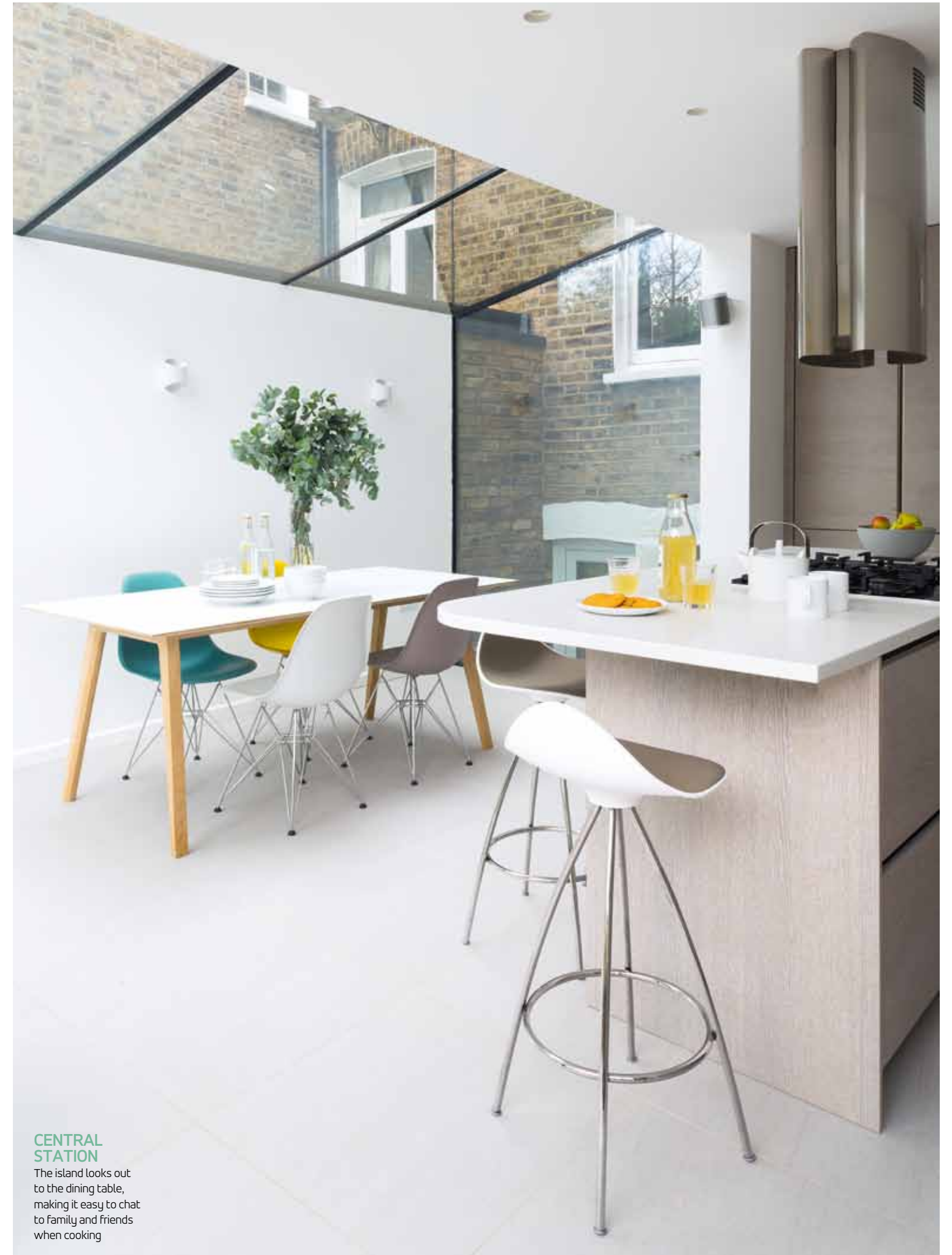
When they bought their Edwardian four-bedroom terraced home in North London six years ago, Sarah and Alastair Brooks thought they had very little work to do. 'The house was in pretty good condition, but over the years, we have actually ended up doing a lot more than we realised we had to in order to make it suitable for our family life,' admits Sarah.

Now that Sarah, an actuary, and accountant Alastair have two daughters, Isabelle, four, and Elsie, two, their most recent project is a kitchen extension. 'We wanted a larger room because we love cooking and entertaining, and spending time together as a family in the kitchen,' explains Sarah, adding that the existing room was chilly and uninviting in winter thanks to poor insulation.

Working with architect Peter Lancaric the couple decided to build over the wasted space of the side return. Explains Peter: 'As the house is in a conservation area, it was particularly important to create a design that complements the existing structure, rather than something mock-traditional.' His plan for a frameless transparent glass structure, sweeping over just one solid wall, created a newly enlarged and widened room, filled with natural light. 'Although we have only added an extra eight square metres the room feels so much brighter and bigger,' says Sarah. Bi-fold doors create easy access to the garden, while underfloor heating adds warmth on cold days.

When it came to the design of the kitchen furniture, the couple quickly settled on Funktional Kitchens as their supplier of choice. 'We felt the entire approach of the company was very friendly,' says Sarah, adding that they were also both instantly attracted to the unusual light wood finish they saw on display in their showroom. 'We liked the interesting combination of the warmth of the wood with simple, clean white,' she explains.

The island serves as the hub of the room, allowing Sarah and Alastair to chat to their guests at the dining table when they are cooking. 'Isabelle likes to sit on a stool and get involved in baking, and I think Elsie will do too when she is a little older, so it is a great family space,' says Sarah. And what does she like most about the room? 'It feels so light, calm and welcoming,' she says. 'We just love to sit around the table on a beautiful day and look up at the sky.' **EKBB**



CENTRAL STATION

The island looks out to the dining table, making it easy to chat to family and friends when cooking.

‘Although we have only added an extra eight square metres, the room feels so much brighter and bigger’

GLASS CEILING
The dramatic glass wall allows natural light to flow into the kitchen, as well as the living room and lower level playroom, beyond

Kitchen profile

Handleless Grey Oak Pore and White Ultra Satin furniture has been designed to create a streamlined, modern look in this family kitchen. The two finishes provide gentle contrast, while durable quartz worktops of Compac White Zement create a clean and practical finish. Black and steel appliances and a splashback of fresh green glass complete the sleek design.

FUNKTIONAL KITCHENS
128 Crouch Hill, Crouch End, London, N8 9DY. Tel 020 8341 2020. Also at 42 Cross Street, Islington, London, N1 2BA. Tel 020 7359 4041. funktionalkitchens.co.uk
Kitchen prices from £15,000.



‘One end of the worktop sweeps to the floor with a smart finish and the other is rounded to add a family friendly touch’

SMOOTH MOVES

The Grey Oak finish has a subtle texture, offset by the smooth satin finish of the white



VICKY SHUDELL
DIRECTOR,
FUNKTIONAL KITCHENS



How did you begin the project?

At the beginning we were working from a plan, before the extension was finished. It was clear that the focus was on maximising the natural light and space in the new room, so the layout needed to reflect this. The wall run is very sleek and streamlined, and we made sure that the tall cabinet just in front of the bi-fold doors is stepped back, so that it doesn't obscure the garden views. The tall fridge-freezer and boiler are tucked away in cupboards by the door, again so that they don't create bulky obstructions.

Can you tell us about the finishes?

An all-white glossy design might have looked cold and clinical, so we combined elements of softer, satin

white cabinetry with a grey wood to add some gentle warmth and texture. The White Zement quartz worktop gives a clean finish, which is also very practical as it is so hardwearing, while the green of the glass splashback adds a pop of colour and echoes the garden view.

And the island? The island makes the focal point in the room, an effect enhanced by the tubular extractor hood which is very striking. It is also a very practical cooking zone, with the wide gas hob and lots of prep surface. The worktop sweeps down to the floor on one end, to create a very smart finish as you enter the room, while the other end is softly rounded, to add interest and a family friendly touch.



CHILD'S PLAY

Above right Isabelle (left) and Elsie, enjoy a snack while sitting on the new bar stools

PERFECTLY PRACTICAL

Right The extra-wide gas hob from Siemens has four burners plus a wok burner, with easy clean glass surface





ON REFLECTION

Above The glass roof has three panels with minimal framing, allowing maximum natural light into the new extension

BLENDING IN

Above right White on white: the Darø Archos wall light has a matt lacquered exterior to blend with the simple white wall

UP AND AWAY

Right A wide expanse of transparent glass creates an almost seamless transition between inside and out

Stockists

APPLIANCES

HB676GBS1B **oven**, £829; CM656GBS1B **combination microwave**, £850; BI630CNS1B **warming drawer**, £370; ER726RB71E **gas hob**, £807; KI86NVF30G integrated **fridge-freezer**, £933; SN66L080GB fully integrated **dishwasher**, £559, all Siemens.

FIXTURES AND FURNISHINGS

Similar, BlancoLinus **mixer**, £300; BlancoClaron 550-U **sink**, £459, both Blanco. Compac White Zement **worktops and island side cladding**; Back-painted glass **splashback**, both priced to order, Funktional Kitchens. Valverdi City Grey Indoor-Out **floor tiles**, from £35 per sq. m, The London Tile Co. Stua Onda 2-tone **bar stools**, £246 each, A White Room. Bella by Hay **dining table**, from £939, Haus. Vitra Eames DSR **chairs**, £230 each, John Lewis. Darø Archos **wall lights**, from £96 each, Funktion Alley.

ARCHITECT Peter Lancaric at P.LANSTUDIO 07930 696769

CONSTRUCTION PHS Construction 020 7476 6648

phsconstruction.co.uk

GLAZING Cantifix 020 8003 0582 cantifix.co.uk

FOR STOCKISTS, SEE PAGE 150



‘We just love to sit around the table on a beautiful day and look up at the sky’

